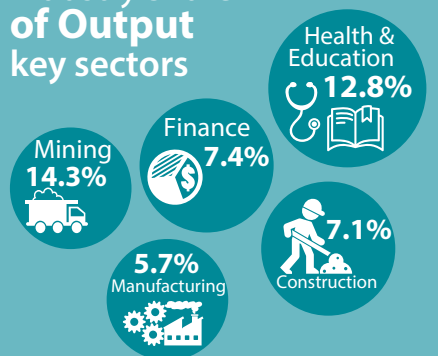


Composition of the Australian Economy

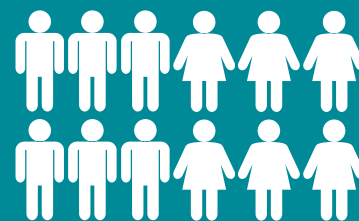
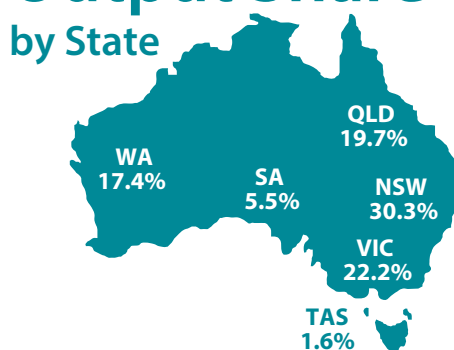
SNAPSHOT 8 August 2024



Industry Share of Output key sectors



Output Share by State



Population

27.0 million

2.5% annual growth

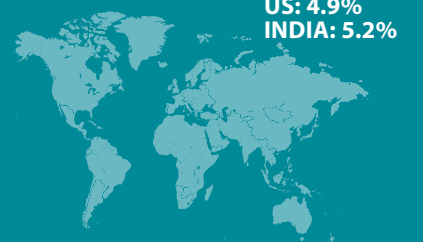
Export Share by type

Resources: **62.5%**
Services: **17.9%**
Rural: **10.2%**
Manufactured: **7.4%**



Export Share by destination

CHINA: **32.4%**
JAPAN: **13.1%**
EU: **4.7%**
KOREA: **6.3%**
US: **4.9%**
INDIA: **5.2%**



Employment to population ratio

64.2%



Average Price of Residential Dwellings
\$959,000



Household wealth

as a share of income



Household debt

as a share of income

185%



Data in this snapshot are the latest available as at 7 August 2024.



RESERVE BANK OF AUSTRALIA

 www.rba.gov.au

 @RBAInfo

 @ReserveBankAU

 @ReserveBankAU

 Reserve Bank of Australia